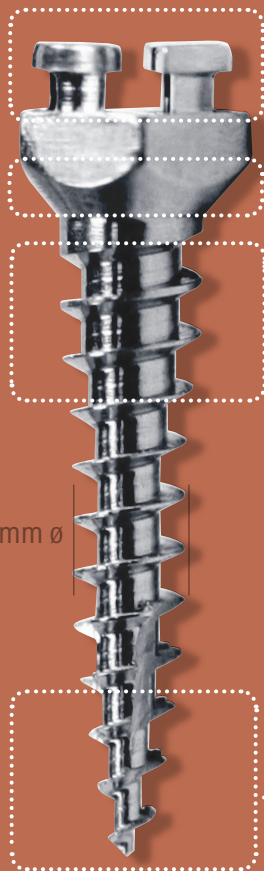
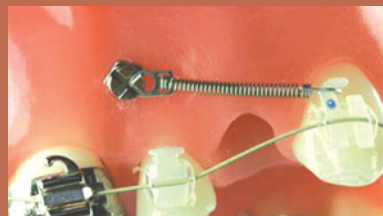


Why choose Infinitas?



Unique Universal Head Design (patent pending)

Easy and direct attachment of all forms of traction auxiliaries and archwires due to the sophisticated low profile design and in particular no need for custom-made closing coils.



Angled Transmucosal Neck

Ensuring close contact to the cortical bone contour at any insertion angle.

Thread full length of Mini implant body

The self drilling thread continues through the cortical bone maximizing contact and stability.

2mm diameter through cortical bone

All Infinitas Mini Implants have a flared (2mm) cervical diameter to increase contact with cortical bone and maximize stability.

Self-drilling insertion technique

Infinitas Mini Implants do not require pilot hole drilling as they have a self-drilling thread. (Excessive torque is avoided in areas of dense cortical bone with the use of the unique Infinitas bone punch.) (Image shown 1.5mm \varnothing 9mm Shortneck Infinitas Mini Implant)

Implant Head



The implant head was designed to facilitate appliance (wire springs and elastometric chain) placement. Two intersecting slots can accommodate wire upto 21" x 25".

Transmucosal Neck



1.5mm neck for areas of thin mucosa.
2.5mm neck for areas of thick mucosa

Self-Drilling Thread



All Infinitas mini implants are self-drilling assuring easy insertion and maximum stability.